

## Adjustable Air Handler Base ( Foldable )

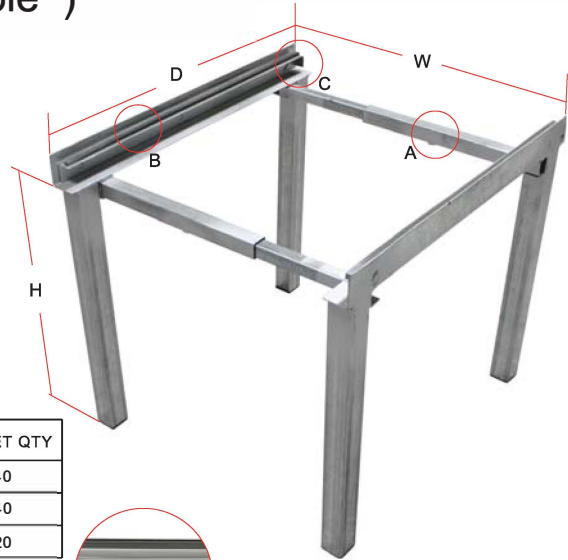
**STRUCTURES**

**FRAME:**

14 GAUGE ASTM A-653 HOT-DIPPED GALVANIZED STEEL SHEET

**TUBING:**

16 GAUGE HOT-DIPPED GALVANIZED STEEL TUBE



**SPECIFICATIONS**

MODEL	WIDTH(W)	HEIGHT(H)	DEPTH(D)	RATED LOAD	BOX QTY	PALLET QTY
AHS-18HD-26	16-26"	18"	26"	500 LBS	1	40
AHS-24HD-26	16-26"	24"	26"	500 LBS	1	40
AHS-36HD-26	16-26"	36"	26"	500 LBS	1	20

CUSTOM HEIGHTS AVAILABLE UPON REQUEST

**FEATURES**

NO ASSEMBLY REQUIRED

FOLDABLE STRUCTURE DESIGN (PATENT PENDING)

STANDARD DEPTH 22"

ADJUSTABLE WIDTH FITS MOST AIR HANDLER UNITS

BUILT-IN FILTER RACK FITS STANDARD 1" FILTERS

RUBBER STRIPS INCLUDED TO MINIMIZE VIBRATION

PLASTIC CAPS IN LOWER LEG OPENINGS



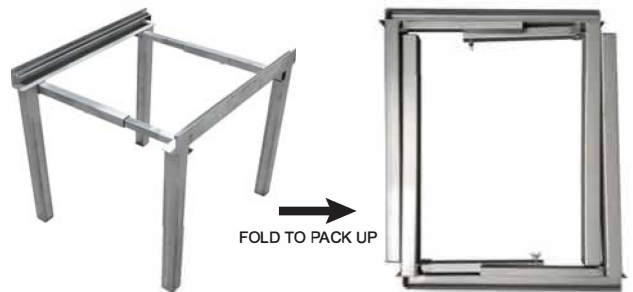
A: MOUNTING PIN DESIGNED TO FIX THE WIDTH AND STABILIZE THE BASE



B: RUBBER STRIPS INCLUDED TO MINIMIZE VIBRAION



C: FILTER RACK WITH STOPPER TO FIX FILTERS WELL



D: FOLDABLE STRUCTURE DESIGN TO SAVE SHIPPING AND STORAGE SPACE (PATENT PENDING)

JOB NAME:
LOCATION:
ARCHITECT:
ENGINEER:
CONTRACTOR:
CONTACT SMART ELECTRIC FOR ADDITIONAL INFOMRATION OR WITH SPECIAL REQUIREMENTS 12201 NW 107TH AVENUE MEDLEY, FL33178, USA TOLL FREE: 1 866 591 9898 FAX: 305 500 9896 WWW.SMARTELECTRICUSA.COM

**AHS**

AIR HANDLER STAND

PRODUCT SPECIFICATIONS

NOTE: ALL DRAWINGS SUBJECT TO CHANGE WITHOUT PRIOR NOTICE



DRAWN BY:	DATE:	SCALE: NOT TO SCALE	DRAWN NO.
CHECKED BY:	DATE:	REVISION: C	AHS003