

**PRINTING INSTRUCTIONS: MAKE EXACTLY 8 IN X 10 IN. WHITE BACKGROUND WITH BLACK PRINTING**

**MATERIAL: ADS-4574-02, PRESSURE SENSITIVE, ADHESIVE BACKED MATERIAL**

REVISIONS

01 REVISED FROM CONTROL TRANSFORMER. ADDED NOTES 7 AND 8.

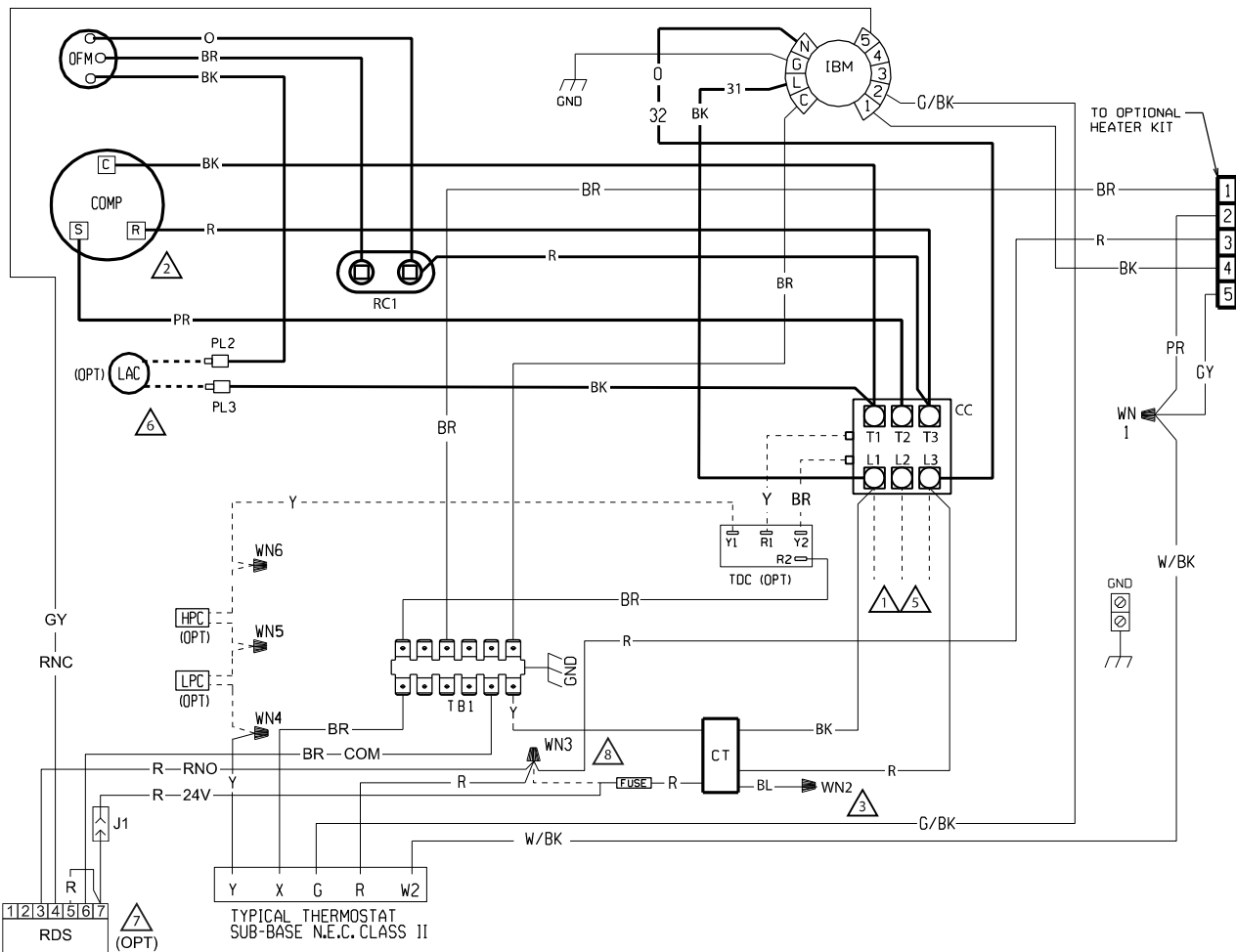
VYM

120077  
8/27/2024

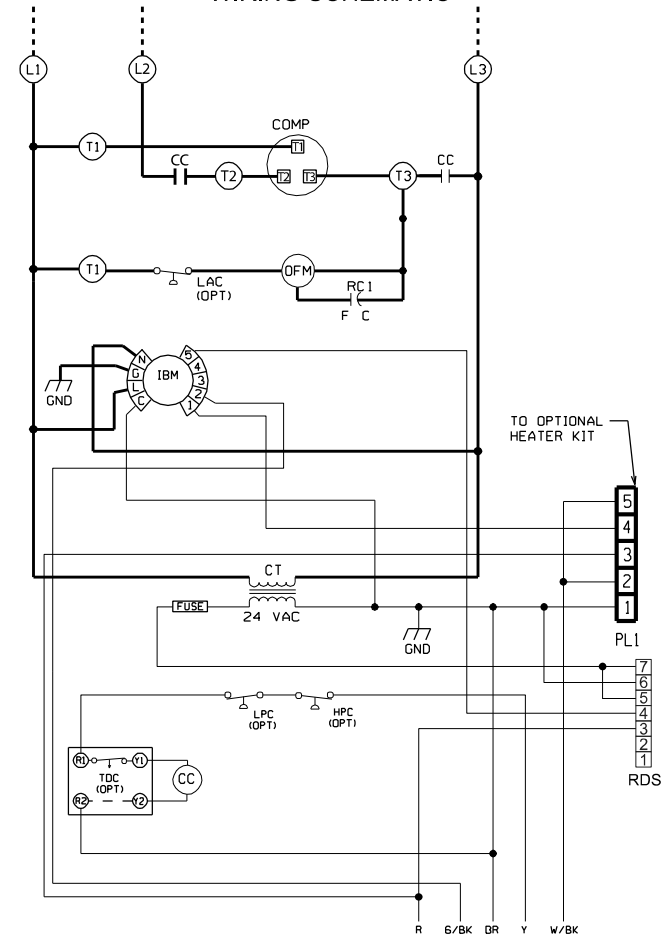
NO REVISION TO DESIGN, MATERIAL, TOOLING, OR PROCESS IS ACCEPTABLE WITHOUT PRIOR APPROVAL FROM RHEEM THROUGH AN AUTHORIZED CHANGE NOTICE. A REVISED ENGINEERING SPECIFICATION AND A RESAMPLING OF PARTS, THE SUPPLIER IS RESPONSIBLE FOR NOTIFYING RHEEM R & D AND PURCHASING DEPARTMENTS IN WRITING OF ANY CHANGES AFFECTING PRODUCT QUALITY, PERFORMANCE, RELIABILITY, PACKAGING, DELIVERY OR WORKMANSHIP. ANY DOCUMENTS REFERRED TO ON THIS DRAWING ARE INCLUDED IN THE SPECIFICATIONS FOR THIS COMPONENT.

NOTE: THE DOTTED BOX NEAR THE DRAWING NUMBER REPRESENTS A .25 X .25 2D DATA MATRIX. SEE ADS-104669-01 FOR DATA MATRIX SPECS.

**WIRING DIAGRAM**



**WIRING SCHEMATIC**



**WIRE COLOR CODE**

BK.....BLACK G.....GREEN PR.....PURPLE  
BR.....BROWN GY.....GRAY R.....RED  
BL.....BLUE O.....ORANGE W.....WHITE  
Y.....YELLOW

**WIRING DIAGRAM / SCHEMATIC**

AC 030/036/042/048/060  
(3 PH 208-230V 60HZ)

APPROVED:	CHECKED:	ORIGINAL RELEASE NO.:
MODELED BY: VYM	DATE: 7/5/2024	118806
PART NO.:	90-23637-26	REV: 01

**WIRING INFORMATION**

LINE VOLTAGE  
-FACTORY STANDARD \_\_\_\_\_  
-FACTORY OPTION - - - - -  
-FIELD INSTALLED - - - - -

LOW VOLTAGE  
-FACTORY STANDARD \_\_\_\_\_  
-FACTORY OPTION - - - - -  
-FIELD INSTALLED - - - - -

REPLACEMENT WIRE  
-MUST BE THE SAME SIZE AND TYPE OF INSULATION AS ORIGINAL (105C. MIN.)

**WARNING**  
-CABINET MUST BE PERMANENTLY GROUNDED AND CONFORM TO I.E.C., N.E.C., C.E.C., NATIONAL WIRING REGULATIONS, AND LOCAL CODES AS APPLICABLE.

**NOTES**

- ⚠ CONNECTORS SUITABLE FOR USE WITH COPPER CONDUCTORS ONLY.
- ⚠ COMPRESSOR MOTOR THERMALLY PROTECTED.
- ⚠ TRANSFORMER FACTORY WIRED FOR 230 VOLTS. USE RED AND BLUE LEADS FOR 208 VOLTS.
- ⚠ MOTOR FACTORY WIRED FOR LOW SPEED. SEE AIRFLOW TABLES IN INSTALLATION INSTRUCTIONS TO DETERMINE CORRECT SPEED FOR UNIT APPLICATION.
- ⚠ FIELD WIRING OR CONNECTION FROM HEATER KIT FUSE BLOCK.
- ⚠ PL2 & PL3 ARE CONNECTED WHEN LAC IS NOT PRESENT.
- ⚠ RDS IS STANDARD IN 4 AND 5 TON, OPTIONAL ON REMAINING MODELS.
- ⚠ WN3 & CT(R) CONNECTED WHEN RDS IS NOT PRESENT.

**COMPONENT CODES**

- ALC..... AUX. LIMIT CONTROL
- BR..... BLOWER RELAY
- CC..... COMPRESSOR CONTACTOR
- CCH..... CRANKCASE HEATER
- COMP..... COMPRESSOR
- CT..... CONTROL TRANSFORMER
- GND..... GROUND
- HPC..... HIGH PRESSURE CONTROL
- IBM..... INDOOR BLOWER MOTOR
- LAC..... LOW AMBIENT COOLING CONTROL
- LPC..... LOW PRESSURE CONTROL
- OFM..... OUTDOOR FAN MOTOR
- OPT..... OPTIONAL
- PL..... PLUG
- RC..... RUN CAPACITOR
- RDS..... REFRIGERANT DETECTION SENSOR
- TB..... TERMINAL BLOCK
- TDC..... TIME DELAY CONTROL
- ⚠..... WIRE NUT